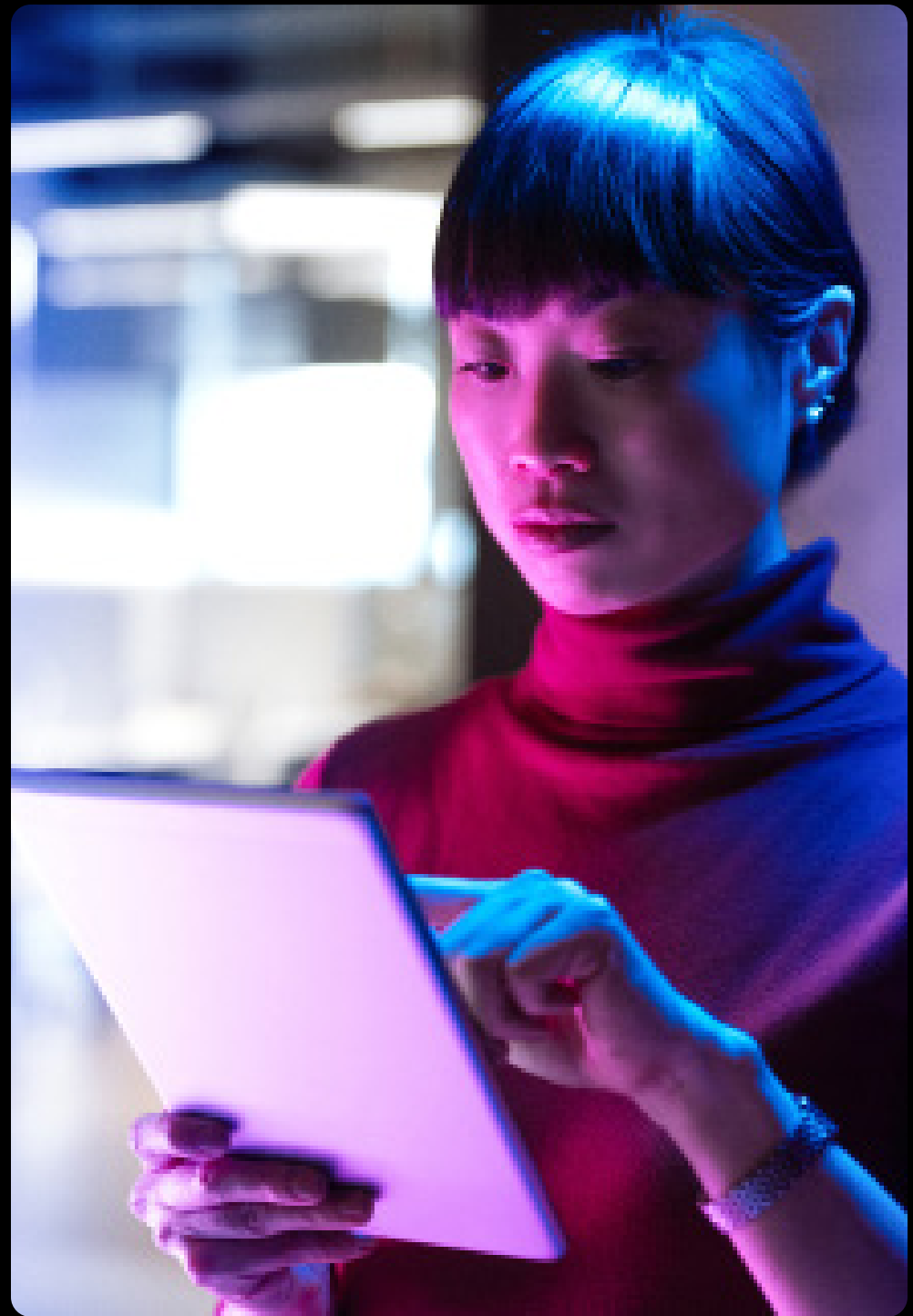




# Unified Network Intelligence for Enterprise Operations

The question isn't whether your networks will face critical moments.

It's whether your Ops Team is ready with the answers you need to respond at mission speed.





# Answering “Impossible” Network Questions

## Innate Network Intelligence

*Team Know How to Act*

- ⦿ **Vendor-agnostic collection**
- ⦿ **Real-time mapping of device relationships**
- ⦿ **Continuous collection** with historical replay

**ITPIE gives operators innate awareness** of your entire network infrastructure so they can act at-speed.

## Mission-Speed Response

*Answers in Mins vs Hours*

- ⦿ **Threat response = minutes**
- ⦿ **Complex configuration = hours**
- ⦿ **MTTR: 90%+**

**When “impossible” tasks come in, operators have the answer in minutes** — with historical data.

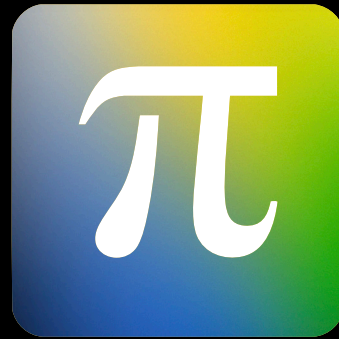
## All-Terrain Visibility

*See the Unseeable & Talk to It*

- ⦿ **HAIPEs integration** no other tool has
- ⦿ **Complete operational view** across domains
- ⦿ **Operator-first tooling** and intelligence

For the first time ever, operators can **visualize how classified and unclassified networks connect** through encryption devices.

Network managers are people who cannot fail. Their problems are our purpose.



Network intelligence and automation  
**tools that teams trust and love.**





Integrated tools for **complete network intelligence** + **reliable enterprise automation**



**OPS** Discovery



**Axiom** Automation

Mission-Critical Network Intelligence

AI Augmentation

Operator-Built. DoD-Tested. Enterprise-Scale.

# ITPIE



APL Certified for DoD Requirements

# Enterprise-Scale Capabilities



## Hybrid Environment Network Mapping

- IP + MAC + ARP relationship mapping
- Only solution that maps across air-gapped classified/unclassified networks
- Integrates with encryption devices (HAIPes)

## All-Terrain Device Discovery + Collection

- Vendor-agnostic works with any IP device
- Classified/unclassified environments
- Continuous MAC address tracking
- Complete forensic capabilities at the ready

## Enterprise Intelligence & Automation

- Actionable Ops intelligence
- Sub-second query performance with NLP
- Intent-based automation
- Business-critical device-level tracking in minutes
- Hard configurations with extreme speed + without error

**85,000+**  
devices

**115+**  
CONUS & OCONUS Installations

**Zero failures**  
in 12 years

Army NETMOD Engineers do not migrate a base without ITPIE

# ITPIE Transforms Your Operations



## Unlocks the Operator

Gives operators the immediate intelligence they need to make critical network decisions with certainty.

## Force Multiplies the Team

Get the understanding, tools, and language-based automations to act at business-speed.

## Resilience in Transformation

Find immediate, concrete answers for changes and planning, and improve network reliability.

Eliminates  
“no answer”  
nightmare calls

- 🕒 Complete network snapshots stored every 5 minutes
- 🎯 99% accuracy when precision is mission-critical
- 🕒 90%+ MTTR improvement for faster issue resolution



# Innate Network Awareness + Operator Intelligence to Meet the Moment

- Answer “impossible” questions
- Migrate with total confidence
- Act at mission speed + operator intent
- Achieve “never been done before”



# Contact Information

Contact: [Sales@ITPIE.com](mailto:Sales@ITPIE.com)  
[ITPIE.com](http://ITPIE.com)

